



NATURAL BAG

FIBERS 60% jute,
40% cotton

CLEW 100 grs. - 100 mts. - 3,5 oz. - 109 yds.

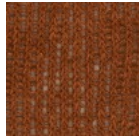
KNITTING NEEDLES 3,5 - 3,5



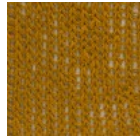
Natural yarn made of jute and cotton, it has a rough texture, ideal for crochet work to create accessories such as bags, belts or home accessories.



1



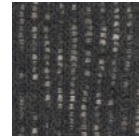
2



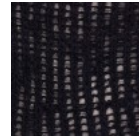
3



4



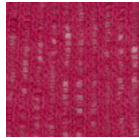
5



6



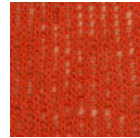
7



8



9



10



11



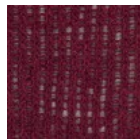
12



13



14



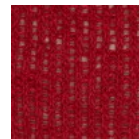
15



17



18



19